

# Monthly Factsheet

May 2026

The RNS NAV Announcement is now available on SEQI's website at: [www.seqi.fund](http://www.seqi.fund)

Sequoia Economic Infrastructure Income Fund (SEQI) seeks to provide investors with regular, sustained, long-term distributions and capital appreciation from a portfolio of private infrastructure debt investments diversified across mature jurisdictions and a range of sectors and subsectors.

## Portfolio Summary<sup>1</sup>

**6.875p**

As of November 2022, the Company has increased its annual dividend target by 0.625p to 6.875p per share for the financial year

**1.06x**

The Company's cash dividend cover for FY26 was 1.06x (HY26:1.01x)

**8.56%**

The current dividend yield is 8.56% as at 31 May, based on the closing share price of 80.30 pence.

**£1.4 billion**

Fund net asset value  
SEQI is the largest listed debt fund on the London Stock Exchange

**50 investments**

Across eleven mature jurisdictions

**£27.5 million**

Average investment size

**3.2 years**

Average life of portfolio assets is 3.2 years<sup>2</sup>  
Average maturity<sup>3</sup> is 3.3 years  
Modified duration<sup>4</sup> is 2.06<sup>5</sup>

**39%**

Average equity cushion behind our loans

**9.68%**

Portfolio average yield-to-maturity/yield to worst

**1.01%**

Ongoing charge ratio<sup>6</sup>

## Key Information

NAV per share (pence)	92.70
Market cap	£1.18bn
LSE Ticker	SEQI
ISIN	GG00BV54HY67
SEDOL	BV54HY6
Year-end	31 March
LSE index constituency	FTSE 250
Listing date	03/03/2015
Shares in issue	1,467,333,278
Share price (pence)	80.30
Premium/(discount)	-13.38%
Total gross assets	£1.4bn
Total net assets	£1.4bn
Equity cushion	39%
Invested portfolio as a % of NAV	104.2%
Total portfolio, including committed amounts, as a % of NAV	109.3%
Portfolio yield-to-maturity/yield-to-worst	9.68%
Annual dividend target	6.875p p.a.
Dividend timing	Quarterly
Next expected dividend declaration	Jul-26
Ongoing charge ratio	1.01%

## Sustainability

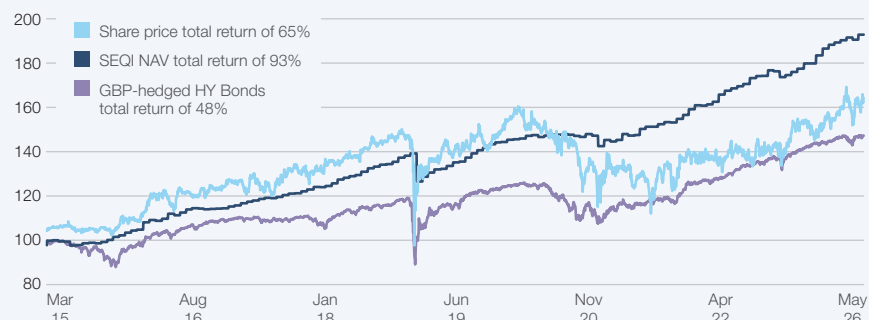
The Company has implemented a comprehensive programme incorporating broad sustainability considerations in its approach to investment through negative screening, thematic investing (positive screening), and ESG scoring using an internal, proprietary scoring methodology. These three areas are independently assured and reported on every half year.



1. All information based on settled investments only i.e. excluding pending transactions.
2. Average life is the weighted average of the times of the principal repayments.
3. Average maturity is the average date on which the final payment is due on a loan.
4. Modified duration is the ratio of percentage increase in price to decrease in yield.
5. Inclusive of interest rate swaps.
6. For the twelve months ending 31 March 2026. The OCR is calculated in line with AIC guidance.

SEQI's Sustainability Policy, Sustainability Report and other publications are available on the Company's website  
[www.seqi.fund/sustainability/publications/](http://www.seqi.fund/sustainability/publications/)  
[www.seqi.fund](http://www.seqi.fund)

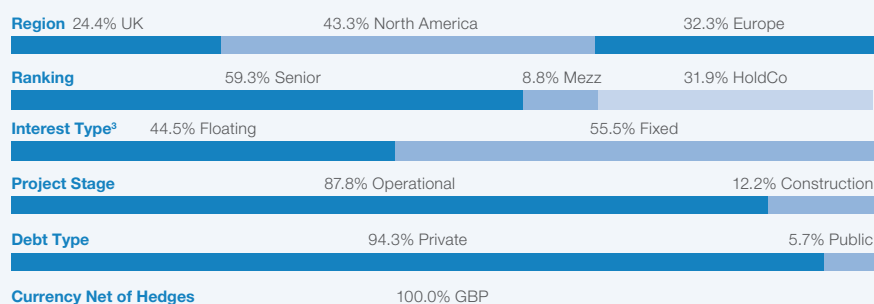
## Performance Since IPO<sup>1</sup>



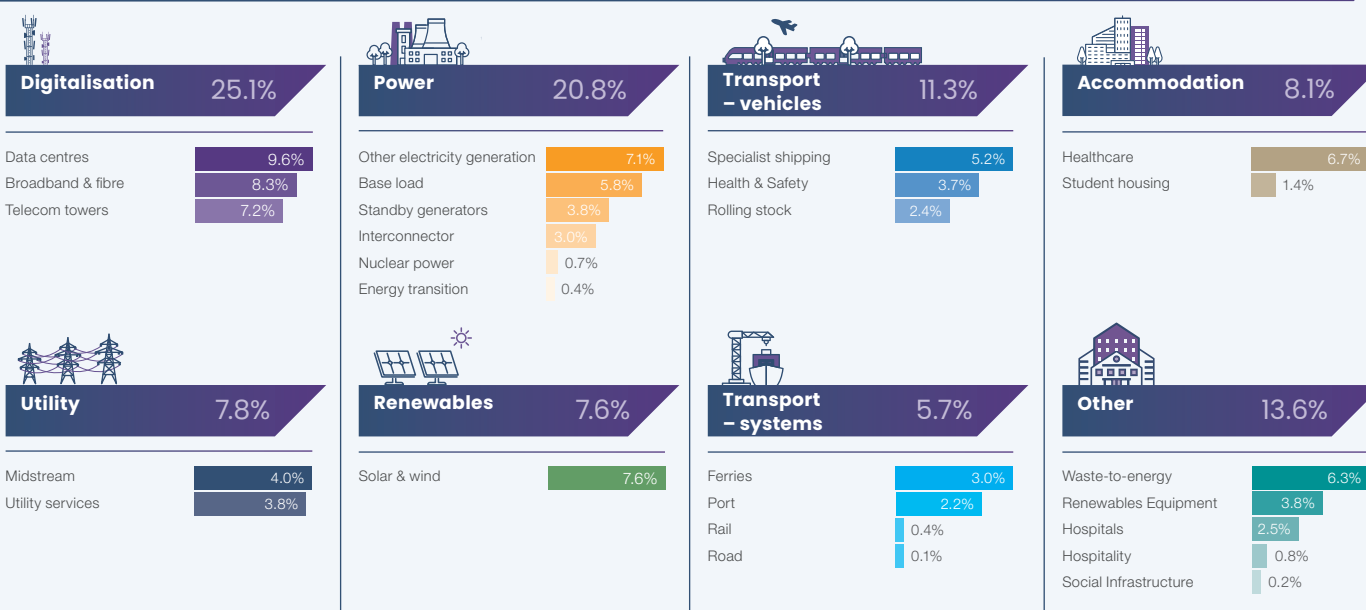
## 5 Largest Investments<sup>2</sup> (Representing 20.44% of the portfolio)

Investment name	Currency	Ranking	Value £m	Sector	Yield to maturity/ worst %
ACG BidCo Limited	GBP	Senior	63.8	Accommodation	20.47
AP Wireless Junior	EUR	Mezz	62.6	Digitalisation	7.79
Grange Backup Power Ltd Facility B	EUR	Senior	52.4	Power	9.10
Muehlhan	EUR	Senior	52.4	Other	7.35
OCU	GBP	Senior	52.1	Utility	8.36

## SEIQ Portfolio



## Diversification By Sector



## Key Contacts

### Investment Advisor

SIMCo,  
4th Floor, 10 Lower Grosvenor Place,  
London, SW1W 0EN  
www.simcofunds.com | pm@simcofunds.com  
Contact: Randall Sandstrom, Steve Cook  
and Matt Dimond

### AIFM

FundRock Management Company  
(Guernsey) Limited  
1 Royal Plaza, Royal Avenue, St Peter Port,  
Guernsey, GY1 2HL  
www.fundrock.com/fundrock-guernsey/  
Sequoia-AIFM@fundrock.com  
Contact: Chris Hickling, Ben Skaok

### Administrator/Company Secretary

Apex Fund and Corporate Services  
(Guernsey) Limited  
www.apexgroup.com  
Admin.Sequoia@apexgroup.com

### Public Relations

Teneo (Financial PR)  
The Carter Building, 11 Pilgrim Street,  
London EC4V 6RN  
www.teneo.com | sequoia@teneo.com  
Contact: Rob Yates, Jessica Pine

### Brokers

Jefferies International Limited  
100 Bishopsgate, London, EC2N 4JL  
www.jefferies.com | gleroux@jefferies.com  
Contact: Gaudi Le Roux

J.P. Morgan Cazenove  
(Joint Corporate Broker & Financial Adviser)  
25 Bank Street, Canary Wharf, London,  
United Kingdom, E14 5JP  
www.jpmorgan.com |  
william.simmonds@jpmorgancazenove.com /  
rupert.budge@jpmorgan.com  
Contact: William Simmonds, Rupert Budge

### Custodian

Bank of New York Mellon  
1 Canada Square, London, E14 5AL  
www.bny.com | sequoia@bny.com

- Benchmark: Global High Yield Bonds GBP-hedged ETF, ticker GHYSLN.
- The Company may have more than one investment with any particular borrower.
- Inclusive of interest swaps.

**Disclaimer** This Report is intended solely for the information of the person to whom it is provided by the Company, the Investment Adviser, the Investment Manager or the Administrator. This Report is not intended as an offer or solicitation for the purchase of shares in the Company and should not be relied on by any person for the purpose of accounting, legal or tax advice or for making an investment decision. The payment of dividends and the repayment of capital are not guaranteed by the Company. Any forecast, projection or target is indicative only and not guaranteed in any way, and any opinions expressed in this Report are not statements of fact and are subject to change, and neither the Company nor the Investment Adviser is under any obligation to update such opinions. Past performance is not a reliable indicator of future performance, and investors may not get back the original amount invested. Unless otherwise stated, the sources for all information contained in this report are the Investment Adviser and the Administrator. Information contained in this Report is believed to be accurate at the date of publication, but none of the Company, the Investment Adviser, the Investment Manager and the Administrator gives any representation or warranty as to the Report's accuracy or completeness. This report does not contain and is not to be taken as containing any financial product advice or financial product recommendation. None of the Company, the Investment Adviser, the Investment Manager and the Administrator accepts any liability whatsoever for any loss (whether direct or indirect) arising from any use of this Report or its contents. Sequoia Investment Management Company Limited, registered in England (registered number 5902847). Registered Office: 4th Floor, 10 Lower Grosvenor Place, London, SW1W 0EN United Kingdom.